



Providers of
Water Quality, Distribution & Collection Software
Backflow Prevention/Hydrant/Valve/Meter/Grease Traps/Reclaimed H2O
Work Order Management and Inventory Control Software

XC2 2k5 Single User and XC2 2k5 Server **Update** **Installation Notes**

Before making ANY changes to your **XC2** program, we strongly recommend that you back up your entire **XC2** folder to a different drive or copied to a CD for safe keeping

It is important to know where XC2_2K5 is installed.

By Default,

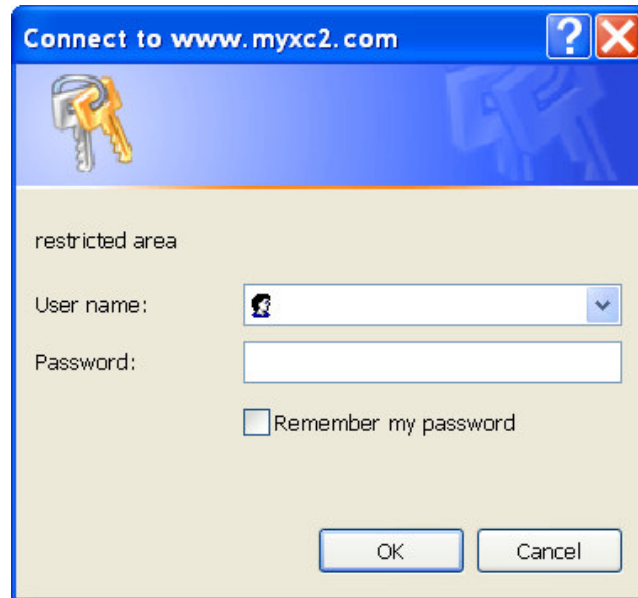
XC2_2K5(Single User) is installed to C:\Program Files\XC2_2K5

XC2_2K5_Server(Server Version) is installed to C:\XC2_2K5_server.

If **XC2** 2k5 was not originally installed into the directories listed above, then you will need to point the update to the correct directory.

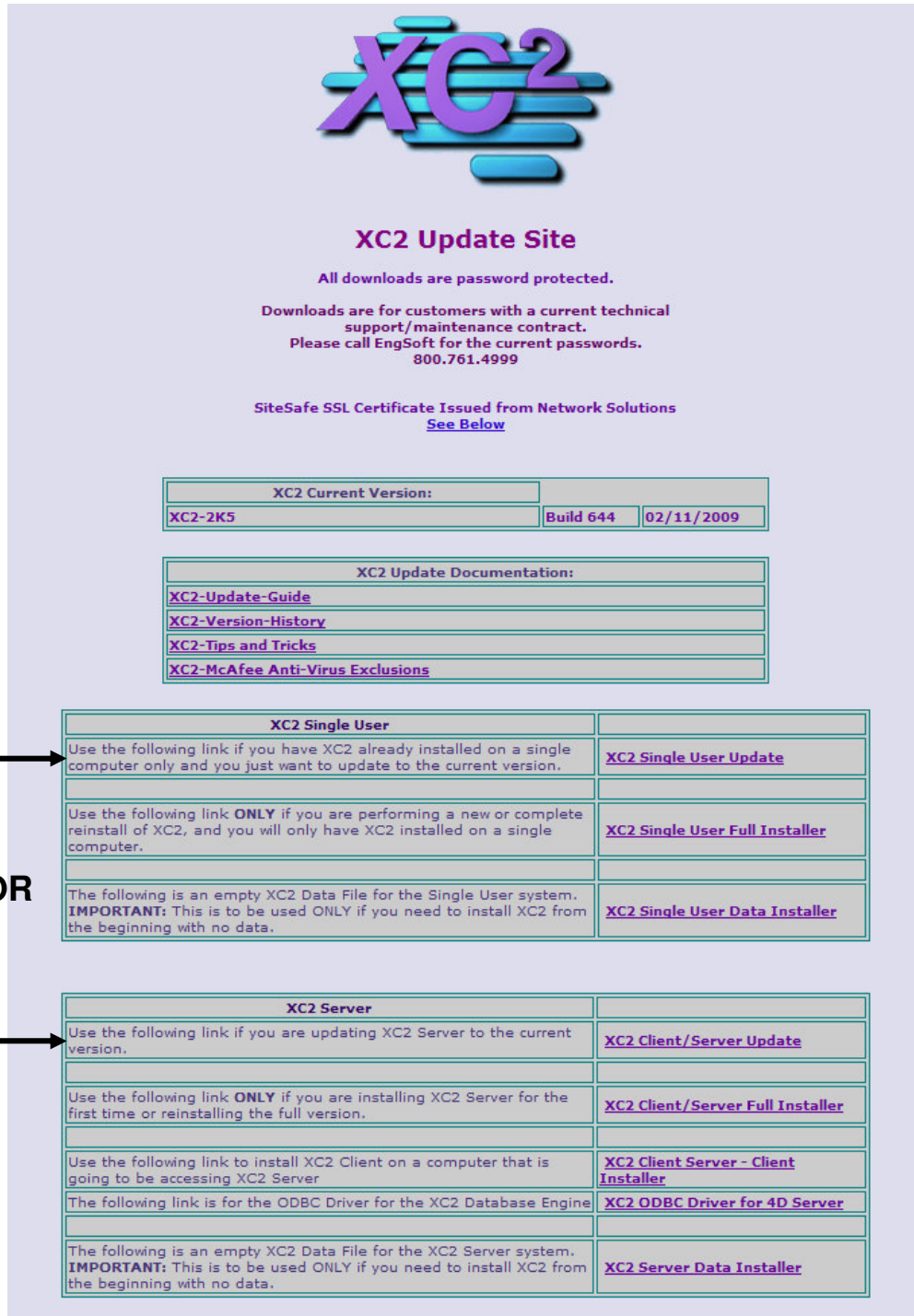
To download and install the latest updates to your **XC2** 2K5 program, go to www.mycx2.com/xc2update

Here you will be asked for a *User Name* and *Password*.



Please call EngSoft Solutions/**XC2** Software for the latest User Names and Passwords

Click on either **XC2 Single User Update** or **XC2 Client Server Update**, depending on your version of **XC2**.



XC2

XC2 Update Site

All downloads are password protected.

Downloads are for customers with a current technical support/maintenance contract.
Please call EngSoft for the current passwords.
800.761.4999

SiteSafe SSL Certificate Issued from Network Solutions
[See Below](#)

XC2 Current Version:		
XC2-2K5	Build 644	02/11/2009

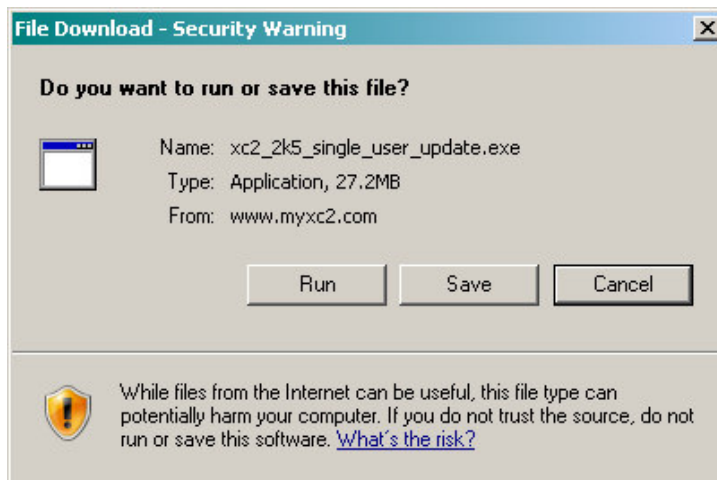
XC2 Update Documentation:	
XC2-Update-Guide	
XC2-Version-History	
XC2-Tips and Tricks	
XC2-McAfee Anti-Virus Exclusions	

OR

XC2 Single User	
Use the following link if you have XC2 already installed on a single computer only and you just want to update to the current version.	XC2 Single User Update
Use the following link ONLY if you are performing a new or complete reinstall of XC2, and you will only have XC2 installed on a single computer.	XC2 Single User Full Installer
The following is an empty XC2 Data File for the Single User system. IMPORTANT: This is to be used ONLY if you need to install XC2 from the beginning with no data.	XC2 Single User Data Installer

XC2 Server	
Use the following link if you are updating XC2 Server to the current version.	XC2 Client/Server Update
Use the following link ONLY if you are installing XC2 Server for the first time or reinstalling the full version.	XC2 Client/Server Full Installer
Use the following link to install XC2 Client on a computer that is going to be accessing XC2 Server	XC2 Client Server - Client Installer
The following link is for the ODBC Driver for the XC2 Database Engine	XC2 ODBC Driver for 4D Server
The following is an empty XC2 Data File for the XC2 Server system. IMPORTANT: This is to be used ONLY if you need to install XC2 from the beginning with no data.	XC2 Server Data Installer

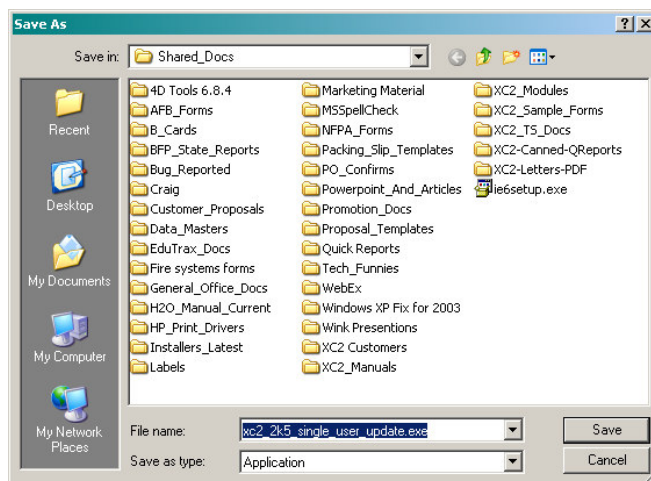
From here, you have the option of Running the update or Downloading the update file for later installation.



! STOP ! **Before Can Update, You Must Exit XC2**

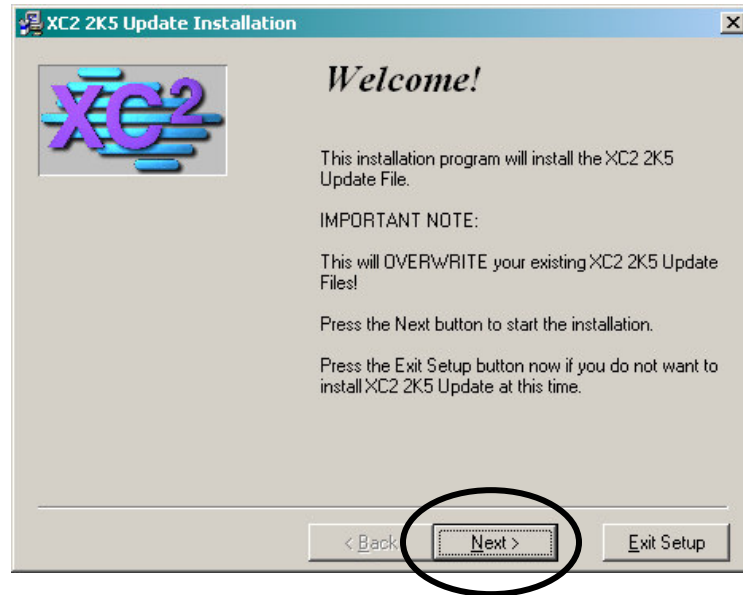
If you select *Run*, the installation will automatically begin after download of update has finished.

If you select *Save*, you will be prompted to choose the location you would like to save the update file.

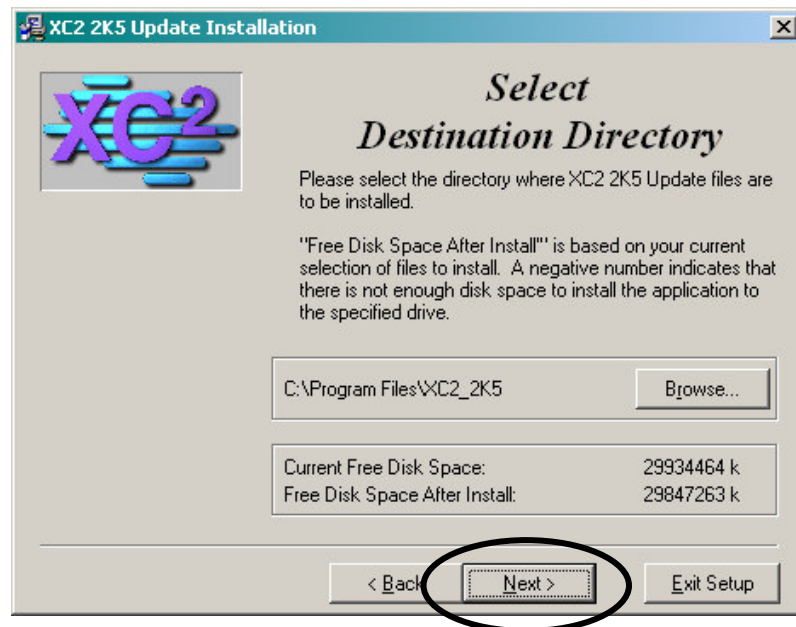


Double Click on the save file  to begin the installation

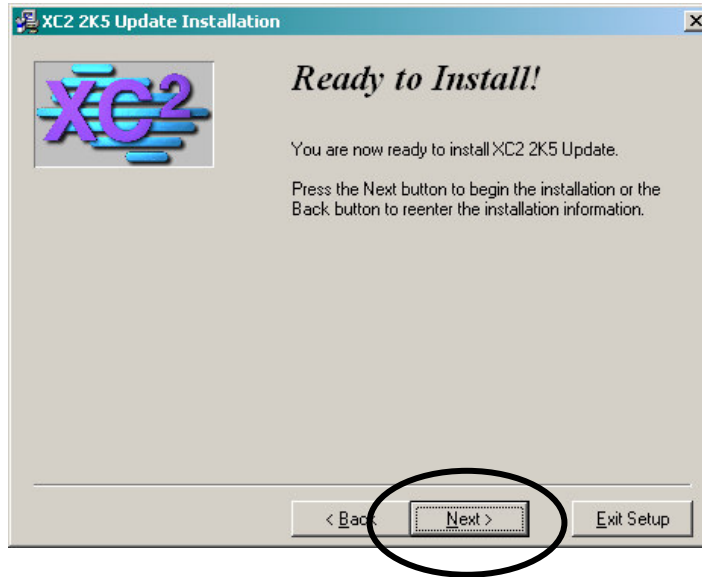
When the installation begins, Click *Next* on the welcome page.



If your **XC2** 2K5 Single User or **XC2** 2K5 Server are installed to the original default location listed on page one, if not click the *Browse* button to direct the installer to the correct directory.

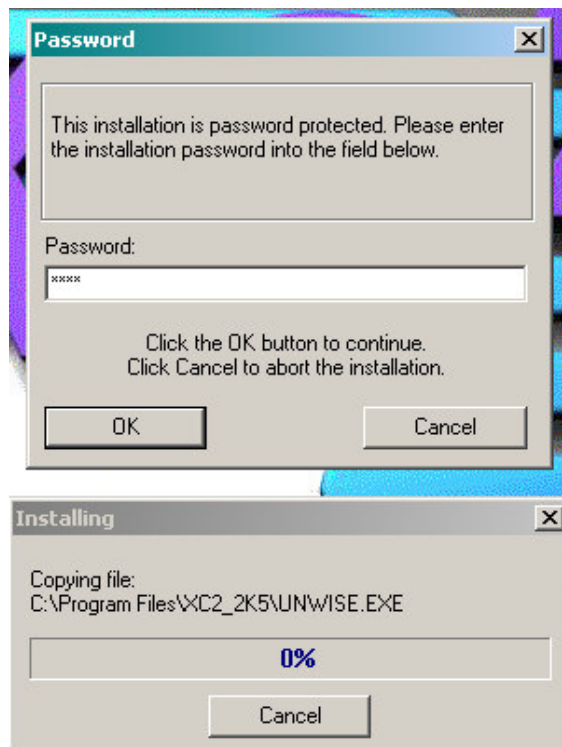


Click *Next*.



The last page will be the Installation Password screen.

Enter the current password.



After the update has finished, close the update and restart **XC2** 2K5